

Please Read All Instructions on Side 1 and 2 Before Beginning the Collection Process.

*Some sample bottles contain preservatives. Please do not empty or rinse bottles prior to filling them.
Fill each bottle carefully...& Only 1 time*

BACTERIA:

- Remove strainer, aerator, or other devices from faucet.
- Disinfect spigot using alcohol. If spigot is metal you may use flame.
- Run water to flush the system.
- Be careful not to touch the inside of the bottle or cap.
- Fill bottle to fill line and cap securely.

Pesticides & Herbicides:

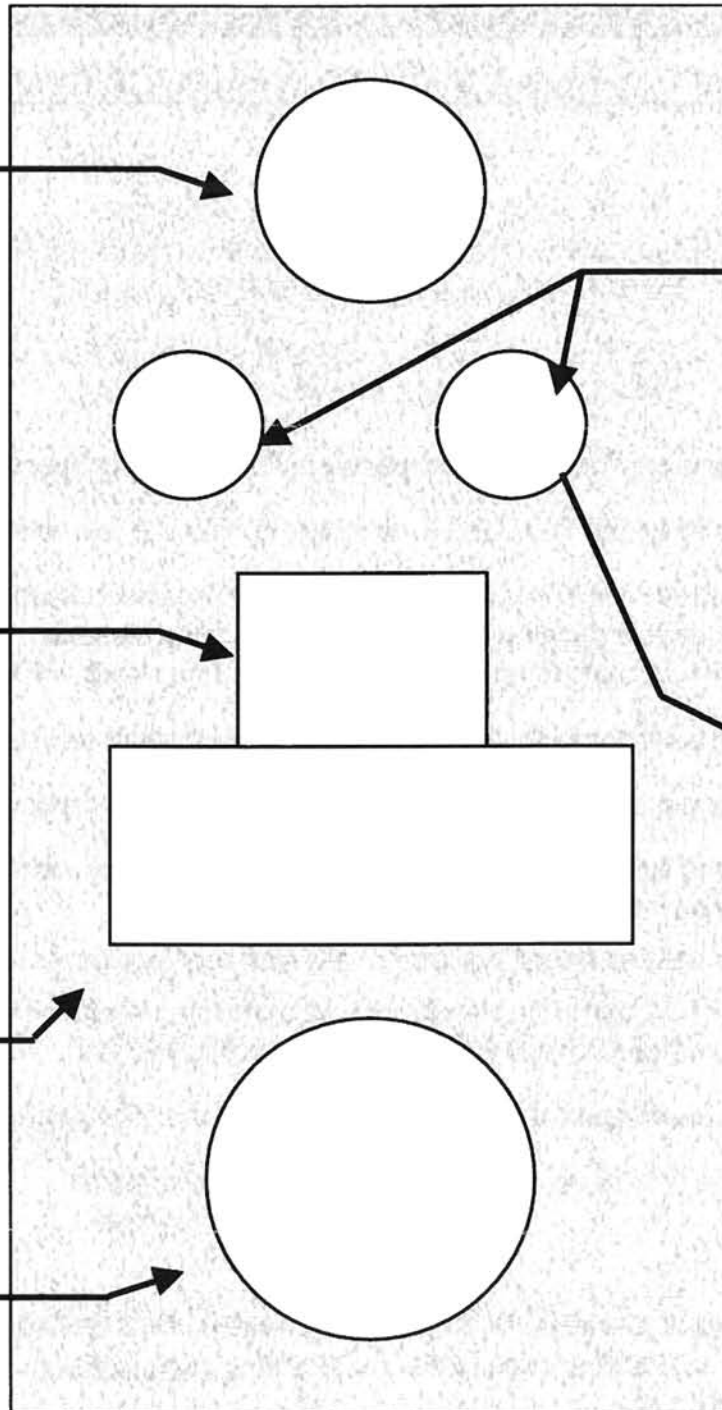
- Fill to neck and cap securely. (Please fill this bottle even if you have not chosen the Pesticide Option. The lab may need the extra water.)

Ice Pack:

- Freeze at least 8 hours, then return to kit just before sampling.

Metals & Physical Factors:

- Fill to neck and cap securely.



THMs & VOCs:

- Adjust water flow to a thin stream.
- Slightly overfill vial so that a "button" of water stands above the rim. (see picture below.)
- Cap firmly, but do not over-tighten.
- Tip vial upside down; if an air bubble has formed in the vial, add more water to displace the bubble.
- Recap and check again.



"button"
of water

**PLEASE DO NOT WRITE ON STYROFOAM
WE RECYCLE THIS PACKAGING MATERIAL**