

A1CNow® SELF CHECK

QUICK REFERENCE GUIDE

91077 B 3/2014

! IMPORTANT!

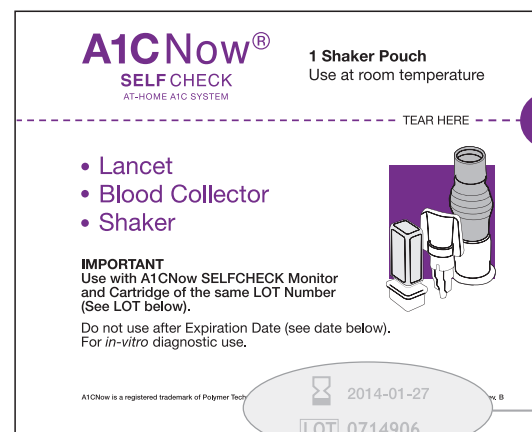
- Do **Not** open pouches until instructed.
- Make sure Lot Number on Monitor matches Lot Numbers on the red and purple pouches.
- Use indoors between 64°F - 77°F / 18°C - 25°C.

For additional information, see Overview and Helpful Hints.

If you have any questions about your A1C result, please contact your doctor or healthcare provider.

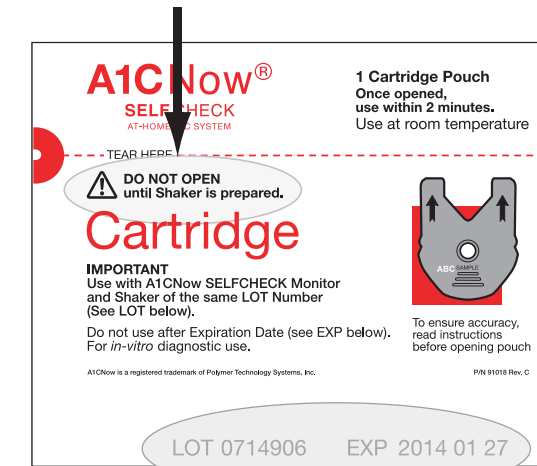
DO NOT adjust your medication unless instructed to do so by your doctor or healthcare provider.

Materials Needed for Testing



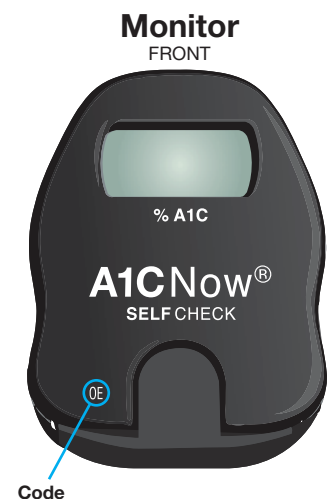
Example Lot Number and Expiration Date

! WAIT TO OPEN



Example Lot Number and Expiration Date

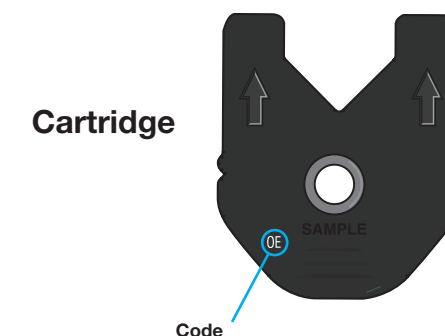
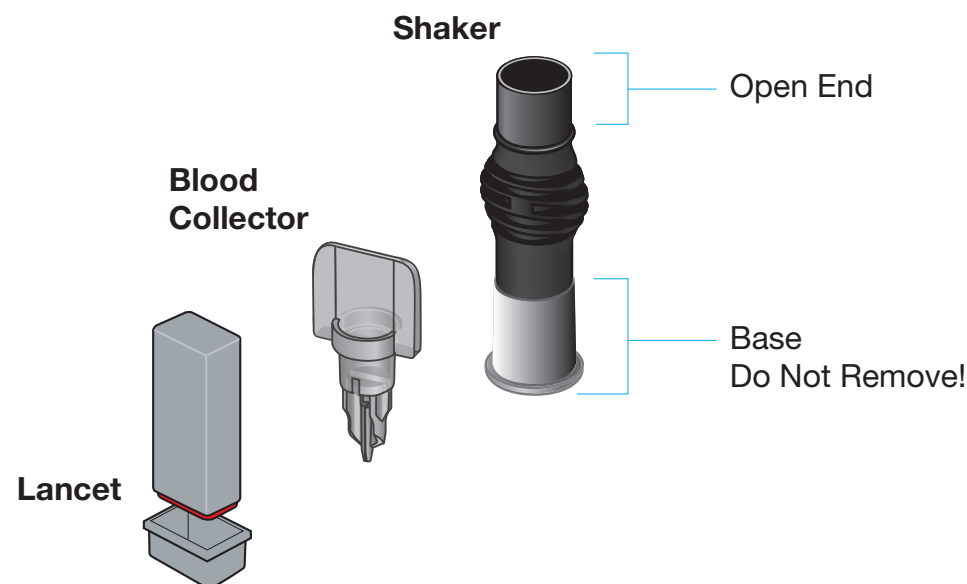
1-877-870-5610
We invite you to call and we'll guide you through the test.



Code



Example Lot Number



Cartridge

Code

A1CNow® SELF CHECK

Result Log

Chart your progress here.

Record your A1C results here, and bring this with you when you see your doctor. Mark down your A1C goal in the space provided.

1

Date: _____

A1C result: _____

A1C goal: _____

2

Date: _____

A1C result: _____

A1C goal: _____

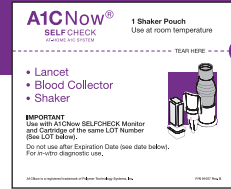
Turn over for
step-by-step instructions

Have a question?
Call us toll-free
1-877-870-5610.

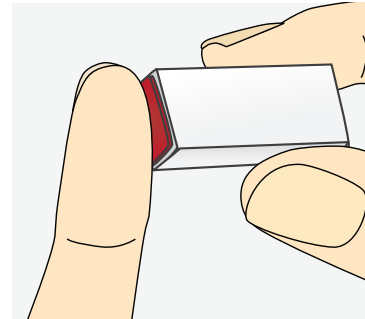
A1CNow is a registered trademark of
Polymer Technology Systems, Inc.

Blood Collection

! Open purple pouch ONLY!

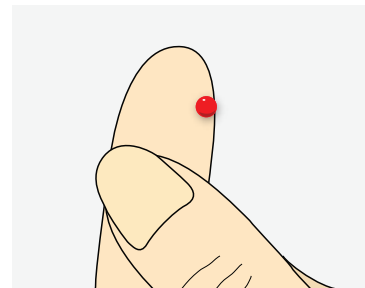


1 Stick Finger



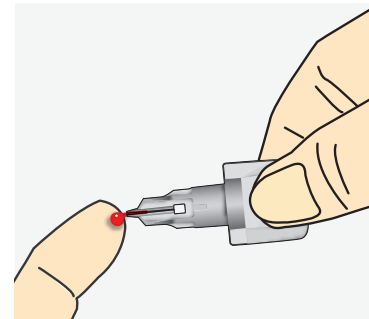
Wash hands or clean with alcohol and dry before testing. Remove cap. Press Lancet into finger.

Gently squeeze finger to get adequate blood.



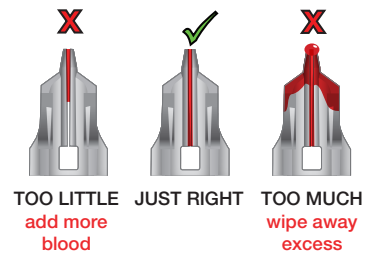
● Actual size required

2 Collect Blood

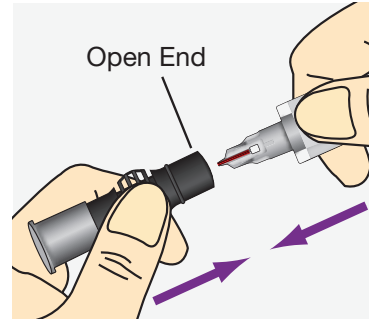


Gently touch Blood Collector to top of blood drop.

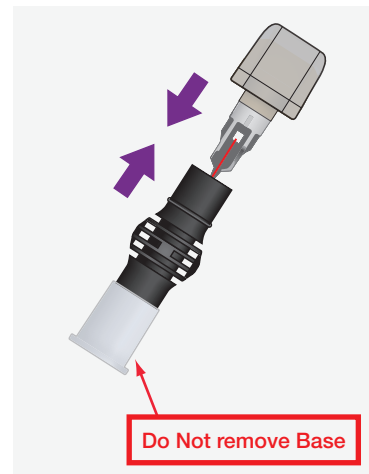
Make sure tube is adequately filled.



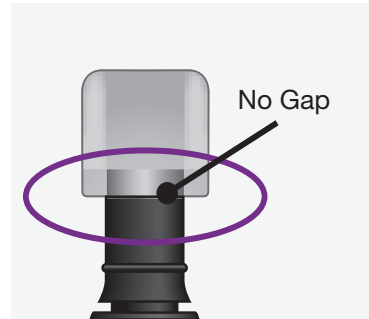
3a Insert Blood Collector into Open End of Shaker



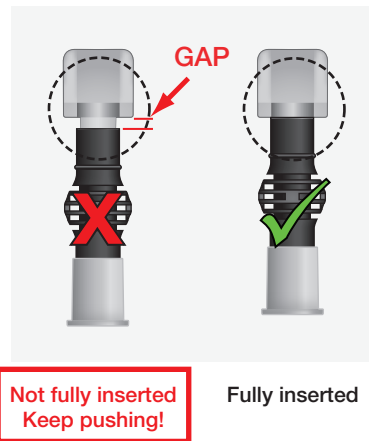
Push hard while twisting to fully insert!



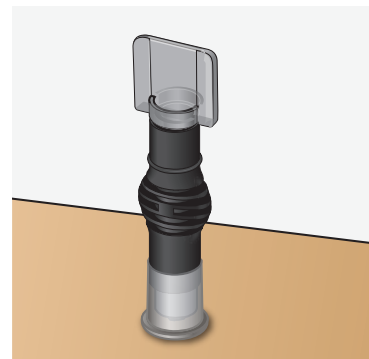
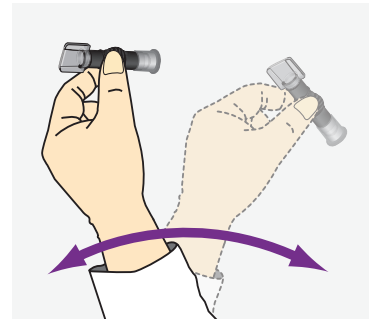
3b Check for Full Insertion of Blood Collector into Shaker



There should be **NO GAP** between the Blood Collector and the Shaker.



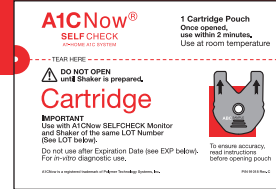
4 SHAKE for 5 Seconds and Set Aside



After shaking, stand Shaker on table.

Blood Testing

! Open red pouch AFTER blood collection!
ONCE OPENED USE CARTRIDGE WITHIN 2 MINUTES



5 Insert Cartridge

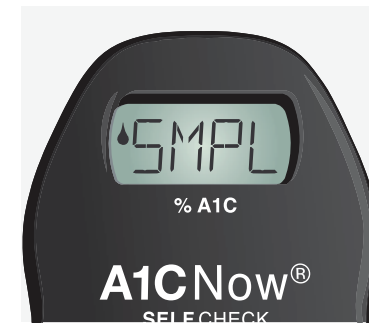


! Push firmly to fully insert!

Cartridge will click into place.

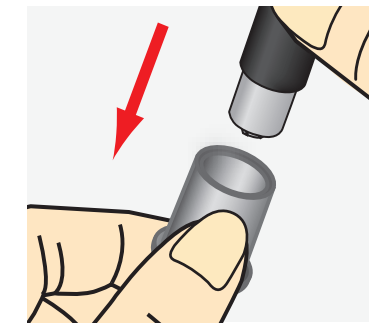
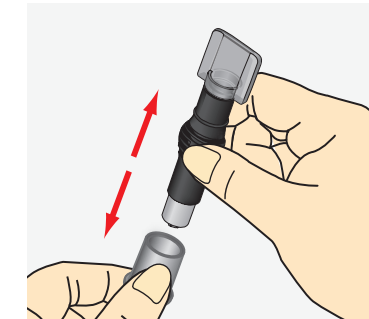


6 "WAIT" for "SMPL" Display



"SMPL" means ready for sample from Shaker.

7a Remove Base from Shaker



7b Press Shaker into Cartridge and Remove Quickly when "RUN" Appears



Leave flat on table.



"RUN" will appear.

8 Do not handle. Wait for result.



Do not handle until the 5 minute countdown is completed. The result will alternate with "QCOK".

Remove Cartridge and discard with Shaker. Save Monitor for second test. Monitor will display "01TL" if there is one test left and "00TL" if you just used your last test.

Record your A1C result in the attached Result Log.

Monitor will show result for 60 minutes and will turn off automatically.

A1CNow®
SELF CHECK

Polymer Technology Systems, Inc.
7736 Zionsville Road
Indianapolis, IN 46268 USA
1-877-870-5610